



The Mid-States Concrete Messenger

April 2007

Volume 1 | Issue 2

MCI Takes the Lead with LEED

Judson College Project Expected to Take the Silver

By David Seeley

Human Resources Director

The Leadership in Energy and Environmental Design (LEED) Green Building Rating System™ provides a benchmark for the design and operation of high performance green buildings. One such high performance project, the Judson College expansion, was the result of the collaboration between Bunidge Casell Associates (BCA), Shales McNutt, and Mid-States Concrete Industries.

With the help of a wide array of products and services provided by Mid-States, Judson College's Harm Weber Academic Center is expected to achieve a Silver Rating from the U.S. Green Building Council. Wall Panels, Beams, Columns, and of course Hollowcore were all combined with Mid-State's unique project management program the Face-to-

Face Solution™ to create this high efficiency structure. The Harm Weber Center is expected to be one of the "greenest" academic buildings in North America.

This 80,000 square foot classroom and library building will utilize passive ventilation for much of the year as well as passive heating and cooling in place of conventional



Photo by Dennis McDougall

Judson College located in Elgin, IL shows the different LEED elements .

mechanical equipment. A massive natural light well acts as a centerpiece to the main structure and eliminates the need to run florescent bulbs much of the time, increasing the comfort of building occupants. Mid-States also provided high quality, and always environmentally friendly, prestressed concrete products, to add to the building's efficiency.

The risk associated with the unique and difficult design details were offset by the shared commitment of the Mid-States team, the architect, and the general contractor to making the project a success, from the design process all the way to the final construction phase. Usually one would expect numerous problems with projects of this magnitude; luckily, the Mid-States Concrete team and their Trademarked Face-To-Face Solution were able to eliminate these problems through careful, committed planning, design, and execution. The results are an example of what an academic building should be, the Judson College Harm Weber Academic Center.

MCI Continues to Add New Capabilities and Capacities

Positive Growth Leads To Expansion of New Products and Services.

By Hagen Harker

President

Helping our current and future customers understand the expanding ways in which MCI can help make their project go more smoothly is a key driver of our success. Getting to the table early allows us to help our clients plan and design the building that exceeds their expectations while ensuring that potential problems are ironed out during the initial planning phase. No one wants problems to first be identified on the job site. Preparing for, anticipating and eliminating these problems before they happen is where the Mid-States

Team has a leg up over the competition.

MCI has welcomed Greg Fisher to the MCI Team. Greg has over 20 years experience promoting, facilitating, designing, and managing precast projects. As Market Development Manager, Greg will be a valuable resource to both our external and internal customers.

Another area where we have expanded our capabilities is with the addition of high quality insulated wall panels with brick form liners to our already impressive array of products.

I am proud of the new capabilities we have added over the last few years both in the types and quantities of precast products we are able to provide and in the quality of project management service and engineering capability. I have no doubt that our team can meet your need. We commit to and look forward to continuing to delight you, our customer,

making your business less complicated and less risky.

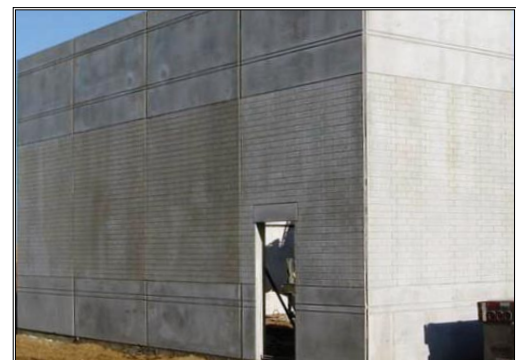


Photo by Toby Bennett

Wall panels being erected at SEC new location. See page 2 for a closer detailed picture.



Leading Indicator's: Prevention Not Reaction

By Shannon Scharmer

Director of Health and Safety



I would like to thank Leach and every Mid-States employee for your continued dedication to safety. Through your efforts our OSHA Recordable rate for 2006, which is a measurement of the number of serious injuries per hour worked, was the lowest since we started tracking it. You may have noticed the yellow safety communication boards throughout the company, please take a look at the results you have achieved for 2006 and I know that with this team, 2007 will show even less of us injured on the job.

We have begun to rollout an effort to gauge leading indicators as well as trailing indicators. In the past we have looked at trailing indicators such as the OSHA recordable rate. The problem is that this indicator moves only after someone has been injured. I know I speak for all of us collectively when I say we want to focus on preventing the injury rather than measuring how many injuries we have had.

The use of leading indicators can help

predict where injuries are more likely to take place, allowing us to intervene before someone is injured. Using the information that you have been gathering during your daily safety inspections we can analyze trends that might indicate reoccurring issues in a specific area. While we already benefit from you correcting the safety issues you see immediately, these trends or leading indicators will give us more information than we had in the past. For example if one area is constantly recorded as having trip hazards we may need to 6S that area to remove any clutter that might be present, preventing a fall before it happens.

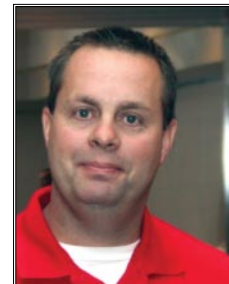
This effort will dovetail nicely into further integrating our lean activities with our Safety initiatives. The use of the lean tools that we have been implementing on the shop floor to improve production efficiency often leads to the elimination of steps needed to produce a quality product. This reduction in steps itself reduces the inherent risk involved. In addition, areas undergoing a Kaizen event usually benefit from the 6S process as well, ensuring a cleaner, more organized area and as a result a safer work area.

Please continue the excellent work, continue to recognize exceptional safety practices in each other via the Safety Nickel Program, and stay safe!

Wetcast Corner

By Gio Piccione

Wet Cast Manager



I would like to thank all of you for welcoming me to our excellent company. I am overjoyed to have joined the Mid-States Team. Already, through our hard work, we have made some major improvements and we are now reaping the benefits of our added capabilities and capacities. I am very proud of your ability to adapt and overcome any obstacle to better serve our customers, the teamwork you have demonstrated is truly amazing.

Most notably, our ability to build wall panels has increased dramatically over the past few months, both in quantity, quality and also in design. It is very exciting to think that the sandwich wall panels with the faux brick face will be used to build Smith Engineering Consultants new office building. I am sure the building's contractor, Prime Commercial, will be pleased with the panel's quality and quick delivery time. What better marketing tool could there be than to have products used in the construction of the building used by an excellent engineering firm such as SEC?

Beams, columns, insulated wall panels, brick inlays, is there nothing this Wet Cast team and this company can't provide to our customers? Even after working with all of you for only a short time, I realize that we will be able to build whatever our customers need. This company has always prided itself on being easy to work with, certainly the same can be said of all of you. I don't mean to repeat myself, but my family and I would like to send out a big thank you to all of you who have welcomed me aboard. I look forward to a long career here at Mid-States.

A Partner In Our Community

V-Day fund raiser a great success at MCI

By Helen Richards

Hollowcore Production Scheduling



As you know, this section of the newsletter is devoted to celebrating and announcing the successful fund raising efforts we have achieved over the past few months. It's great to work for a company that truly strives to be a partner with its surrounding community.

Thanks to all of you that contributed to the various Valentine baskets that we raffled off in February for the American Heart Association. Your generosity allowed for 100% of the profits from the ticket sales to go directly to the American Heart Association. Thanks also to everyone who bid on the baskets. Even if you

did not win a basket for your significant other, you can rest assured that your money was well spent. Your money will help fund the efforts of the brave men and women of The American Heart Association, who fight the battle against heart disease and stroke in our community.



Photo by Dennis McDougall

Employee donations allowed for 100% of the Valentine's Day raffle proceeds to go to directly to the AHA



Photo by Dennis McDougall

MCI Sandwich Wall Panel lifted out of form exposing front view.



Expand your Freedom > Experience our Commitment

MCI Wishes Warm Farewell To Richard Lantz

Thanks for 37 years of excellence

By David Seeley

Director of Human Resources

The crowd, which included Richard's wife Marge, hushed in eager anticipation as Hagen, President of Mid-States, prepared to begin the retirement celebration. Hagen raised the megaphone and examined the limerick he had been working on for months to suitably praise Richard for his decades of service to the company. The crowd roared with appreciation after the exquisitely crafted limerick of praise for Richard was delivered, partially because of the limerick's unsurpassed quality, but lets face it, mostly because everyone loved working with Richard.

"Richard was a hard charger right up until the time he walked into his retirement party. We had to have someone go get him and tell him

to stop working," explained Rodney Bondele, Maintenance Manager. Rodney went on to say that Richard was the core of the Maintenance Department and that kind of experience is impossible to replace, although he was grateful that Richard was able to impart some of his skill and experience onto the other members of the Maintenance Team before he retired.

"I can remember him training me when I started work at the plant 26 years ago, and I'll never forget the lessons he taught me," stated Hagen during his speech to the entire Mid-States Team that had gathered to wish the best to Richard.

Many were not sure what Richard would do first once he retired, go fishing or play with the multiple toy end loaders he received from the departments he had helped to keep running since the 70's. One thing is for sure, that he will always be welcomed here as a member of the Mid-States Concrete family.



Photo by Dennis McDougall

Company CEO, Charles Harker & President, Hagen Harker offer fond memories of working with Richard Lantz



Photo by Dennis McDougall

The Mid-States Team shows it's appreciation for Richards 37 great years of service and dedication.

"People acting together as a group can accomplish things which no individual acting alone could ever hope to bring about."

- Franklin Delano Roosevelt.

The Mid-States Precast Puzzler II

Test your knowledge of Mid-States and Precast!
(Special thanks to Julie Duchow, Engineer and puzzle maker extraordinaire)

b m s l u m p y g f e c i p
e f y a p g h t g n e r t s
e i t r f g a o e x e n s g
n r c e m e n t p p l a n k
d e c a f o t e c a f i c w
r r g w n a r y d a n f a m
e a a e a t y m i n y l m c
g t a w i t i b a a l e b y
n i l s i x e l a e a x e k
a n e l t n p r e l a i r e
h g a u g l g h n v c c l y
c u r e n g i s e d e o a w
q e t a g e r g g a l r n a
y l n a e e n g i n e e r y

flexicore	quality	keyway	admixture
cement	slump	safety	water
drawings	designer	engineer	expertise
face to face	aggregate	plank	strength
fire rating	camber	balcony	wall
cantilever	lean	planning	hanger

MCI congratulates new SNAP winners



Photo by Dennis McDougall

Eduardo Chavez (left) attempts to purchase a DeWalt Compound Miter Saw from the most recent SNAP drawing winner, Gabriel Cobarrubias. Congratulations Gabriel for your focus on safety.



Photo by Dennis McDougall

Jim Herbst (left) and Hagen Harker (right) present the first ever Field Service SNAP award to Shane Draeving. He received a Waypoint GPS Navigational System. Congratulations Shane for focusing on safety.



Welcome to the the new Mid-States Concrete Industries

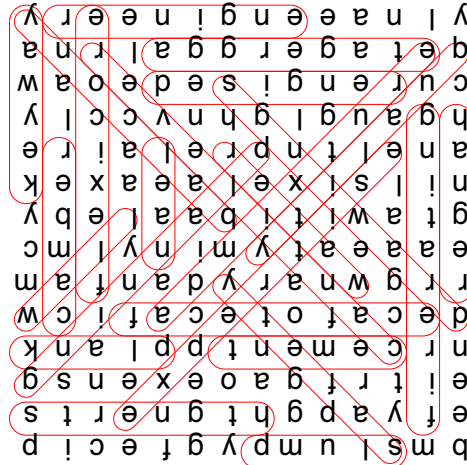
A project management and engineering company specializing in the design, manufacture and construction of precast concrete structures.

In This Issue

- MCI Takes the Lead with LEED's.....1
- MCI Continues with Positive Growth.....1
- Prevention, Not Reaction2
- Wetcast Corner2
- New SNAP Winners announced.....3
- A Farewell to Richard Lantz3
- The MCI Precast Puzzler3



Answer Key



New Ideas New Tools New Freedoms



Mid-States Concrete Industries, 500 S. Park Ave, S. Beloit, IL 61080

P/ 800.236.1072 P/ 815.389.2277 P/ 608.364.1072 | F/ 815.389.2339 | www.msprecast.com

For detailed product information,
Please visit our website at:

www.msprecast.com

Mid-States Concrete Industries
500 S. Park Ave.
South Beloit, IL 61080

TM & © 2007 Mid-States Concrete Industries. All rights reserved. Made in the United States, 2007. "The Face-to-Face Solution™", "The Last-Minute Trap™", "The Structural Profile™", "The Core Solution™", "The Installation Advantage™", "The Investment Protector™" and "Interactive Project Management™" are trademarks of Mid-States Concrete



Expand your
Freedom > Experience
our **Commitment**