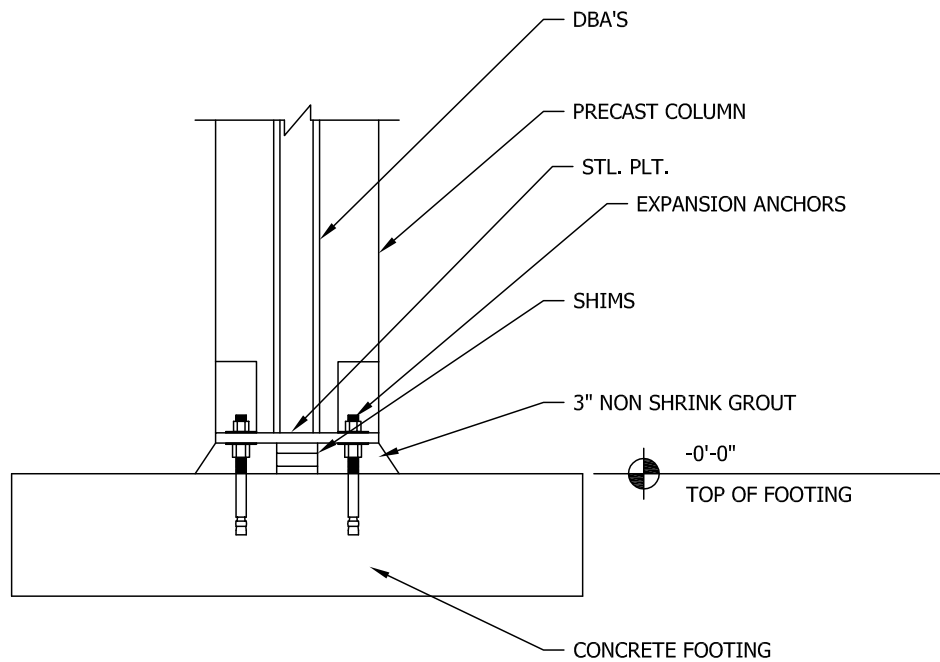


## COLUMN TO FOOTING CONNECTION NON-INVERTED BASE PLATE

for informational purpose only

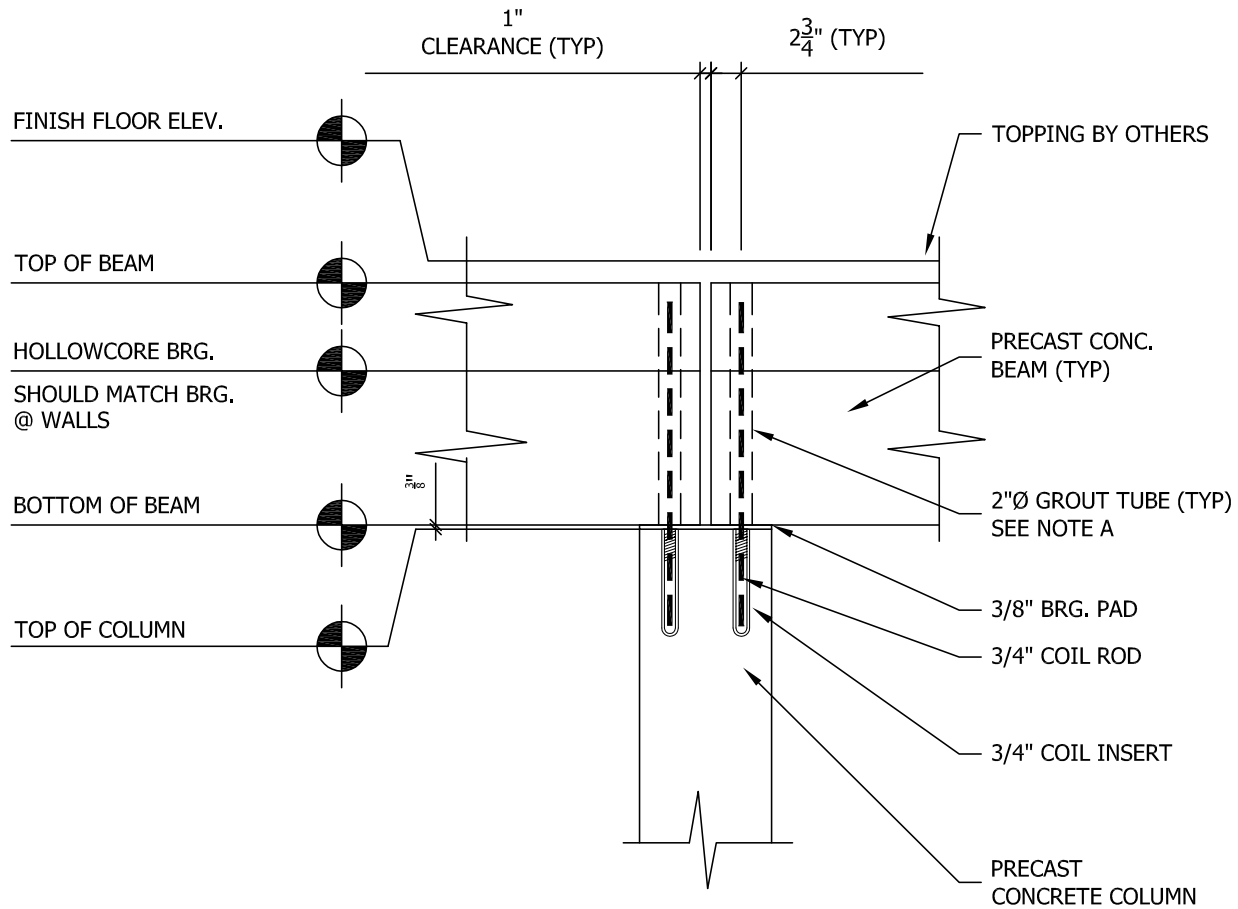




## COLUMN TO FOOTING CONNECTION W/ INVERTED BASE PLATE

for informational purpose only





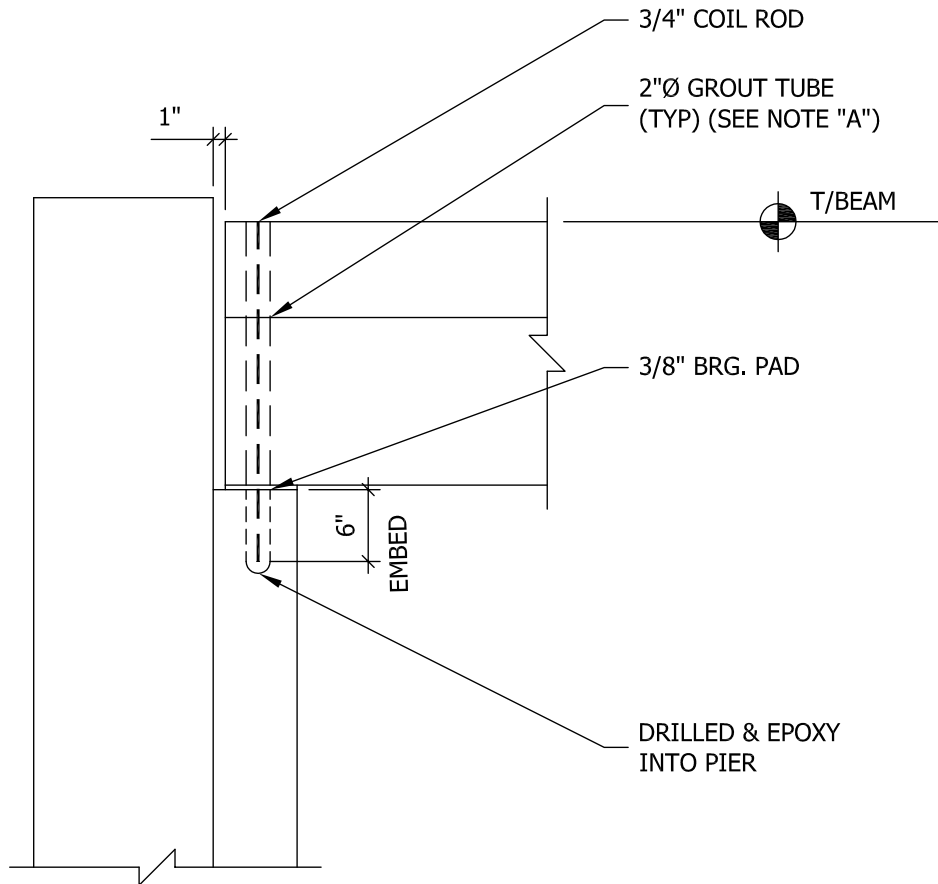
**DOUBLE BEAM BEARING ON COLUMN**

INSTALLATION NOTE "A":

GROUT TUBE TO BE MATED WITH 3/4"  $\phi$  ROD. TUBE TO BE FILLED WITH 6" MIN. SAND. REMAINING TO BE GROUTED WITH CEMENT.

for informational purpose only





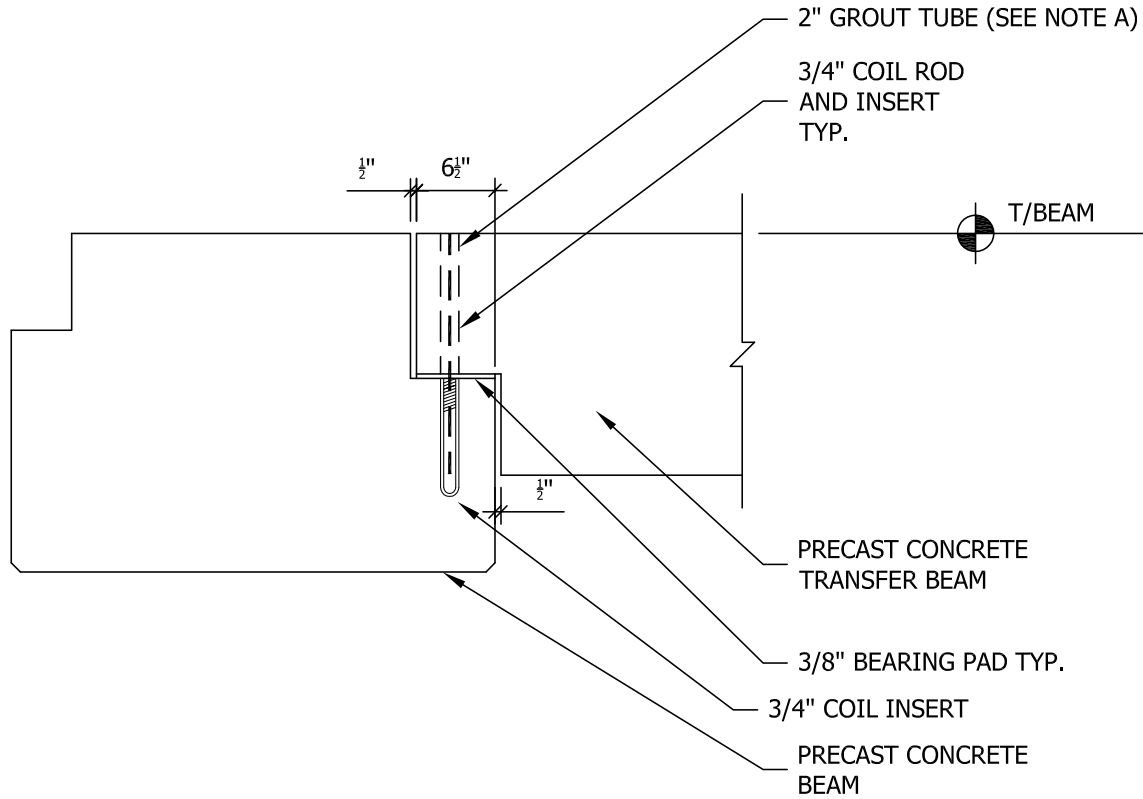
## BEAM TO PIER CONNECTION

### INSTALLATION NOTE "A":

GROUT TUBE TO BE MATED WITH 3/4"  $\phi$  ROD. TUBE TO BE FILLED WITH 6" MIN. SAND. REMAINING TO BE GROUTED WITH CEMENT.

for informational purpose only





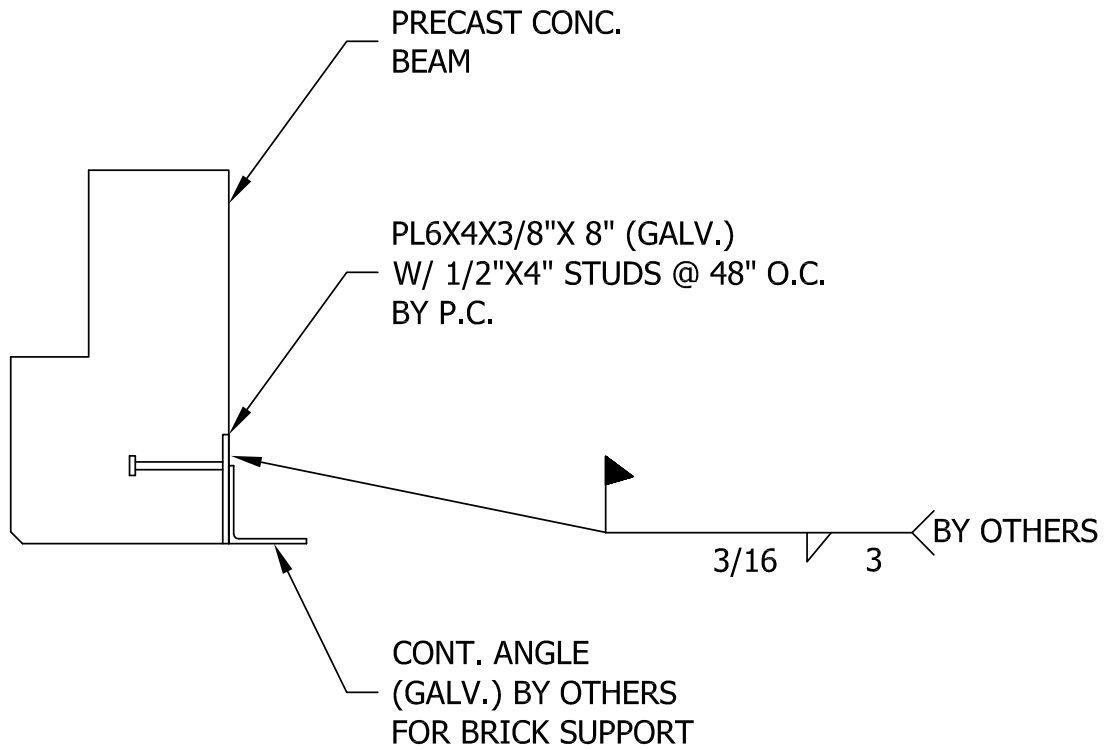
## TRANSFER BEAM W/ DAP

### INSTALLATION NOTE "A":

GROUT TUBE TO BE MATED WITH 3/4"Ø ROD. TUBE TO BE FILLED WITH 6" MIN. SAND. REMAINING TO BE GROUTED WITH CEMENT.

for informational purpose only

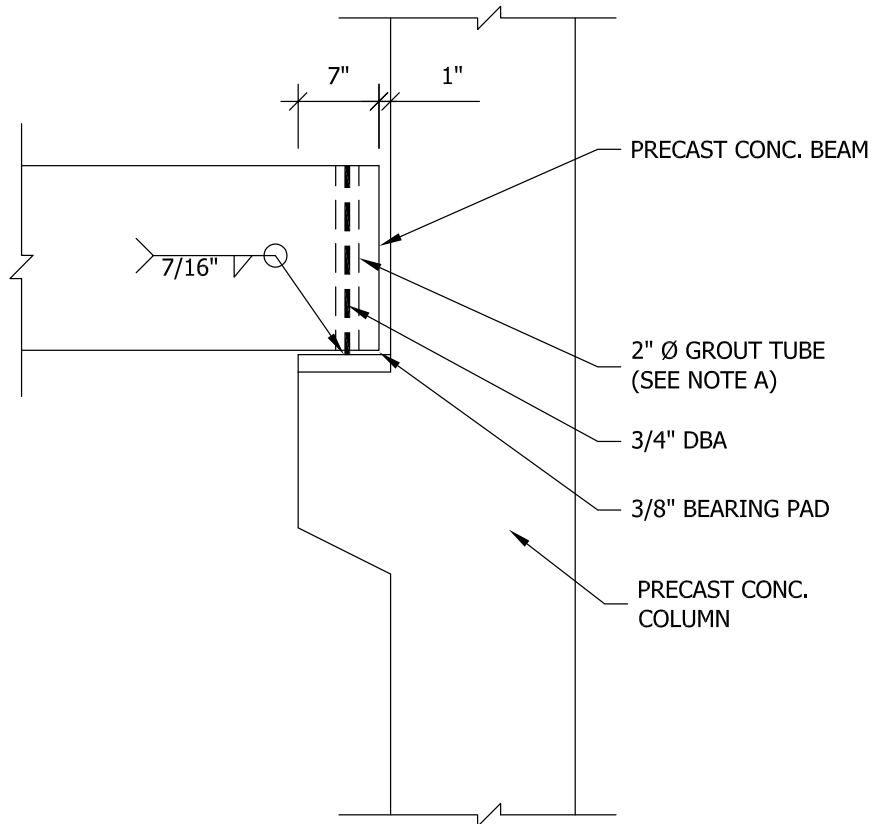




## GARAGE DOOR BEAM DETAIL

for informational purpose only





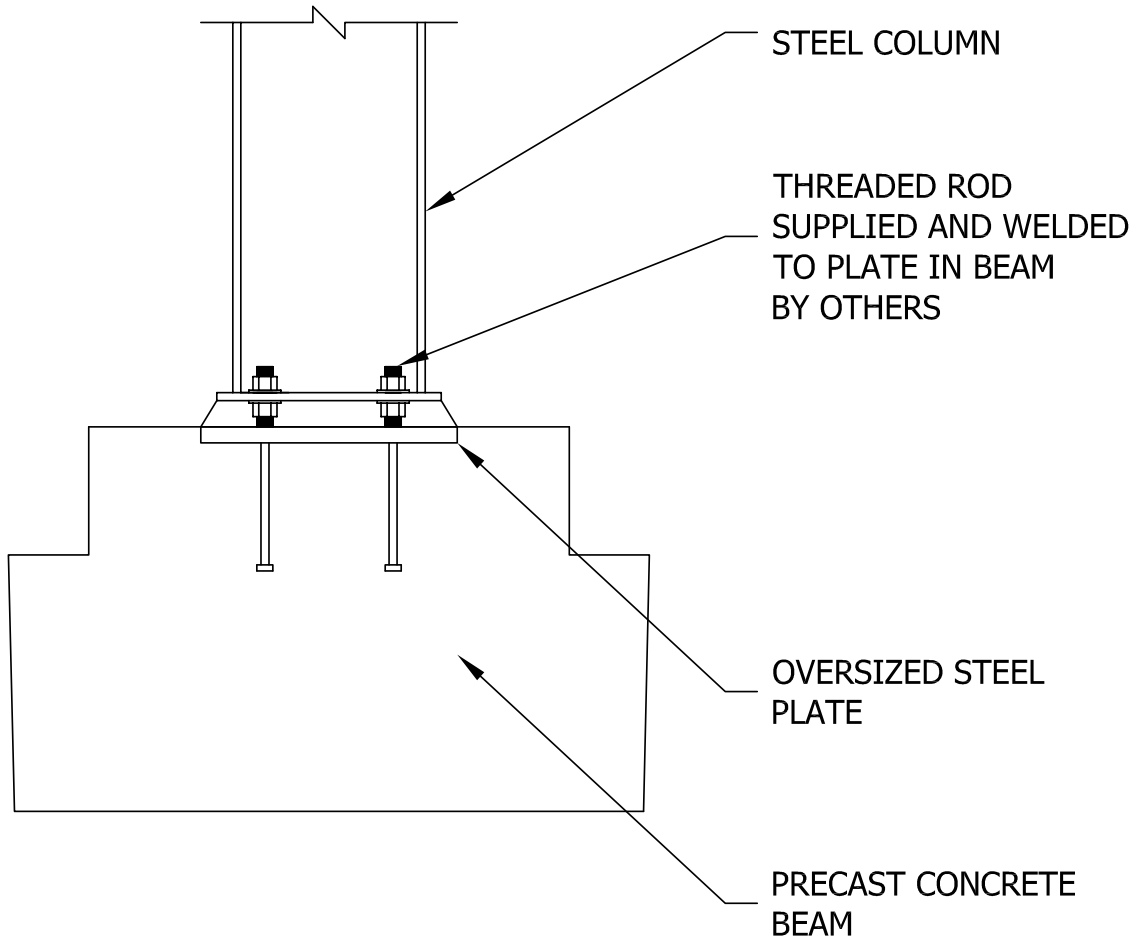
## BEAM BEARING ON COLUMN W/ HAUNCH

### INSTALLATION NOTE "A":

GROUT TUBE TO BE MATED WITH 3/4"Ø ROD. TUBE TO BE FILLED WITH 6" MIN. SAND. REMAINING TO BE GROUTED WITH CEMENT.

for informational purpose only





## STEEL COLUMN TO PRECAST BEAM CONNECTION

for informational purpose only

